

NetIQ® MailMarshal™ for Exchange

Delivers a powerful, feature-rich internal e-mail filtering solution for Exchange

Overview

NetIQ® MailMarshal™ for Exchange is a fast, easy-to-use e-mail filtering solution that monitors and controls internal e-mail communication for organizations deploying Microsoft® Exchange 2003/2000. This helps to ensure a safe and productive working environment by enforcing organizational Acceptable Use Policies (AUP) and protecting against spam and viruses.

Solutions for Today

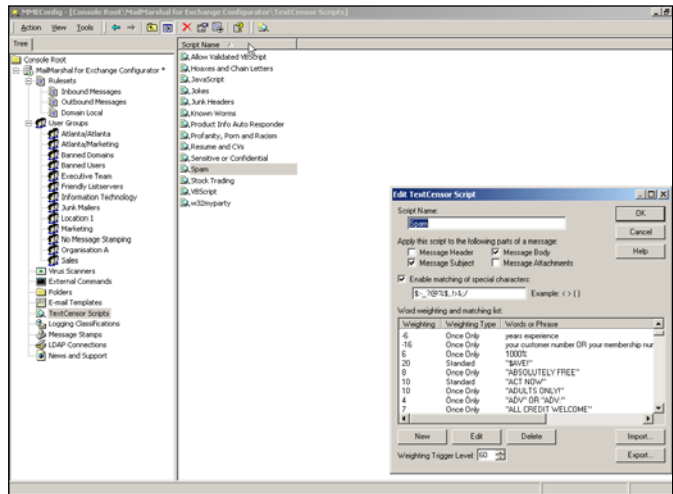
Internal e-mail accounts for most network traffic, and NetIQ MailMarshal for Exchange provides a checkpoint for monitoring this activity. If unchecked, traffic for virus hoaxes, jokes and chain letters can compromise network resources, and confidential data, inappropriate language and harassing messages can expose a company to potential legal claims. NetIQ MailMarshal for Exchange is a powerful solution that enables organizations to see an increase in workplace productivity, better protect corporate assets and reduce the potential for corporate liability.

Key Benefits

Offers comprehensive content security - Protects against internal e-mail threats by using such powerful tools as the SpamCensor spam detection engine and the TextCensor lexical analysis engine. In addition, NetIQ MailMarshal for Exchange helps your organization provide better enforcement of security policies by managing, monitoring and reporting on all aspects of your e-mail AUP.

Supplies seamless management capabilities - Allows you to install and configure NetIQ MailMarshal for Exchange with minimal administrative training. In addition, its comprehensive reporting capabilities enable you to generate reports on e-mail activity and security events by user or group. This provides a detailed window for management into e-mail utilization and policy compliance.

Delivers a rapid return on investment - Reduces network downtime and slow-downs typically caused by virus infections or non-business bandwidth consumption. Protects company assets and your corporate reputation by preventing data loss.



The MailMarshal Configurator is used to set up and manage the software. TextCensor scripts are easy to create and modify according to your company's e-mail AUP. User groups and e-mail templates are also accessed through the MailMarshal Configurator.

Provides flexible virus protection - Integrates with leading third-party anti-virus providers to offer you the most flexible and comprehensive protection in the industry. Not only does NetIQ MailMarshal for Exchange quarantine and clean viruses, it also blocks potentially harmful attachments and identifies common virus characteristics to supplement traditional anti-virus pattern scanning methods.

NetIQ® MailMarshal™ for Exchange

Technical Features

- TextCensor scripts provide lexical and weighted content scanning
- SpamCensor spam detection engine
- High-speed anti-virus scanner support
- Enhanced file type blocking by code structure
- Real-time notification of policy breaches
- Automated responses for common e-mail requests
- Support for end-user quarantined message release
- Message stamping and inserted legal disclaimers as message headers or footers
- Support for different policies with different user groups, while allowing exceptions
- Unpacking and scanning of attachments, including recursive archive unpacking
- Comprehensive usage reports
- Ruleset Wizards and pre-configured rulesets
- Bandwidth calculation, message parking and delayed delivery
- Active Directory® and LDAP support synchronizes users and groups with Exchange server and others

System Requirements

Hardware

Minimum requirements to run an Exchange 2003/2000 environment with NetIQ MailMarshal for Exchange:

- 500 Users: Pentium - III class processor, 500 MHz CPU, 256MB RAM, 10GB HD
- 1000 Users: Dual Pentium III 700, 70GB HD, 1024MB RAM

Software

- Windows 2003/2000 Server with Active Directory
- Microsoft Exchange 2003/2000 with SP2
- Microsoft Management Console (MMC) 1.2
- Microsoft Data Access Components (MDAC) 2.5
- Internet Explorer 5.01
- Microsoft SQL Server 7.0/2000 for reporting (MSDE, a free runtime version of SQL Server, can be used for smaller sites)

Contacts

Worldwide Headquarters

NetIQ Corporation

3553 North First Street
San Jose, CA 95134
713.548.1700
713.548.1771 fax
888.323.6768 sales
info@netiq.com
www.netiq.com

NetIQ EMEA

+44 (0) 1784 454500
info@netiq.com

NetIQ Japan

+81 3 5909 5400
info-japan@netiq.com
www.netiq.com/japan

NetIQ Australia & New Zealand

61 (0) 2 9959 2313
www.netiq.com/au

For our offices in Latin America & Asia Pacific,
please visit our web site at www.netiq.com/contacts

NetIQ MailMarshal for Exchange, NetIQ and the NetIQ logo are trademarks or registered trademarks of NetIQ Corporation or its subsidiaries in the United States and other jurisdictions. All other company and product names may be trademarks or registered trademarks of their respective companies.