

# NetIQ WebMarshal

## Delivers easy, practical and customized control of web browsing

### Overview

NetIQ WebMarshal is a comprehensive solution for employee Internet management. Both powerful and easy to use, NetIQ WebMarshal enables administrators to enforce their company's Internet Acceptable Use Policies as a means of improving productivity and reducing risk. You can eliminate unproductive browsing by allowing users to only view approved sites while blocking offensive content and dangerous viruses.

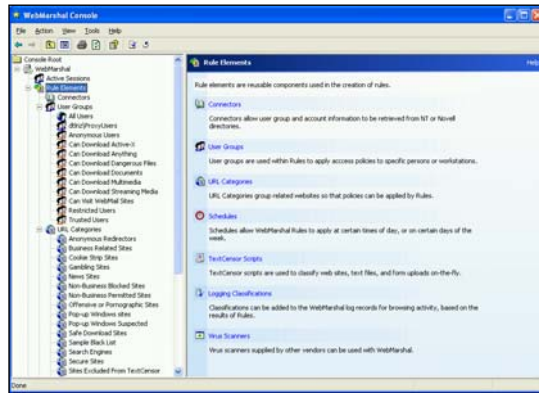
### Solutions for Today

Although the Internet is an essential tool for any business, it can limit productivity and increase risk. Many organizations use written policies to govern acceptable use of the Internet but lack the capacity for policy enforcement. NetIQ WebMarshal offers industry-leading web filtering technology and flexible access control, providing both monitoring and enforcement of these policies.

Acting as a gateway between the Internet and the network, NetIQ WebMarshal allows or denies access to the Internet according to pre-defined company policies or guidelines. This comprehensive solution supports Virus Scanning, Quota Management, URL Blocking and unique Real-time Content Analysis (RCA) of web pages. NetIQ WebMarshal is also fast and totally transparent for end users, even with on-demand virus scanning.

### Key Benefits

**Improves productivity by preventing employees from wasting time and computing resources** - Restores employee productivity lost through non-business browsing with flexible time and bandwidth quotas assigned according to user, workstation or group. NetIQ WebMarshal also controls the type and size of file downloads and uploads while optionally scanning for viruses. Using RCA, NetIQ WebMarshal automatically categorizes unknown web sites into blacklists or whitelists.



The Console is used for software set up and administration. Definitions and rules are developed and activated through the Console. User groups, schedules and other rule elements can be accessed.

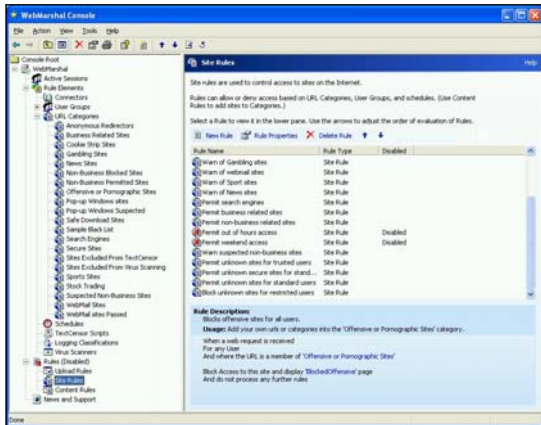
**Reduces legal and security risk by controlling web access** - Protects against the risk of legal liability by preventing employees from browsing offensive content or downloading copyrighted material such as music or pirated software. NetIQ WebMarshal also prevents viruses from entering the network by controlling web-based e-mail accounts and files downloaded from the web and protects confidential information by ensuring private data is not intentionally or accidentally uploaded to public web sites.

**Delivers rapid return-on-investment** - Equipped with an intuitive interface and support for Windows NT or Novell NDS/e-Directory, NetIQ WebMarshal is simple to deploy and easy to manage. As a result, you improve employee productivity and reduce risk, delivering a swift ROI.

**Integrates with NetIQ's security products** - Provides seamless integration with a full range of NetIQ's security solutions, including NetIQ imMarshal for MSN, NetIQ MailMarshal and VigilEnt Policy Center, enabling you to address all content security issues within your enterprise and enforce Acceptable Use Policies.

MONITOR

# NetIQ WebMarshal (cont.)



NetIQ WebMarshal offers maximum flexibility in rule implementation. Specific days of the week and times of day can have more relaxed rule enforcement, allowing employees more freedom during off-peak network traffic times. Certain users can be granted unrestricted rights to Internet use.

## Technical Summary

NetIQ WebMarshal may be installed as a stand-alone proxy, with existing proxy servers or as a plug-in to Microsoft Internet Security and Acceleration (ISA) Server. It also comes loaded with pre-configured policies that may be extensively customized by an administrator. The upgrade process to new versions of NetIQ WebMarshal does not disturb any policy customizations.

- Real-time Content Analysis intelligently identifies and catalogues web sites as they are requested by users
- Site Rules control browsing requests by URL categories and may be conditioned by the time of day allowing allocation of approved times for personal web browsing
- Allows stripping of cookies and denial of ActiveX controls
- Control file downloads and uploads by size and type with optional Antivirus Scanning
- Soft Blocking support displays warning messages before allowing "click-to-confirm" access to remind users of organizational policy
- Management reports can be created from data logged in MSDE (a free runtime version is supplied) or Microsoft SQL Server 7.x/2000
- Provides Windows NT Performance Counters, including active user count and bandwidth utilization
- Utilize high-speed DLL-based Antivirus Scanners from leading vendors and operate multiple Scanners simultaneously (optional)
- Configure multiple NetIQ WebMarshal servers as an array for easier administration or export policy configuration to other NetIQ WebMarshal servers
- Supports failover redundancy in Windows 2000 Advanced Server Clusters

- Supports Network Load Balancing environments including Microsoft Network Load Balancing services
- Shared design with NetIQ MailMarshal and NetIQ imMarshal for MSN provides "learn one, know them all" simplicity
- Extensive use of Wizards and Task Pads simplify on-the-fly policy implementation and policy testing
- Flexible Quota management wizards control access by time and/or bandwidth
- Secure Connectors import, and automatically update, user groups from Windows NT or Novell NDS/e-Directory
- Separate administration console application may be accessed by multiple administrators
- Monitor page requests by user or users in real time

## System Requirements

### Hardware

- 400 MHz Intel Pentium® II or higher, 512 MB RAM, 5 GB HDD

### Software

- Windows 2000 or later
- Microsoft SQL Server 7.0/2000, (MSDE, a free runtime version of SQL Server, is supplied and can be used for smaller sites)

## Contacts

### Worldwide Headquarters

NetIQ Corporation  
3553 North First Street • San Jose, CA 95134  
713.548.1700  
713.548.1771 fax  
888.323.6768 sales  
info@netiq.com  
www.netiq.com

NetIQ EMEA  
+44 (0) 1784 454500 • info@netiq.com

NetIQ Japan  
+81 3 5909 5400 • info-japan@netiq.com  
www.netiq.com/japan

NetIQ Australia & New Zealand  
61 (0) 2 9959 2313  
www.netiq.com/au

For our offices in Latin America & Asia Pacific,  
please visit our web site at [www.netiq.com/contacts](http://www.netiq.com/contacts)