

## The Integrated, Affordable, and Customizable Spam Blocking Service

Spam e-mail costs you time and money by tying up mail server and network resources and decreasing employee productivity. Security analysts estimate that over 60% of Internet e-mail today is spam, and that percentage is increasing. IT departments are challenged with deploying and maintaining an effective spam blocking solution painlessly and affordably.

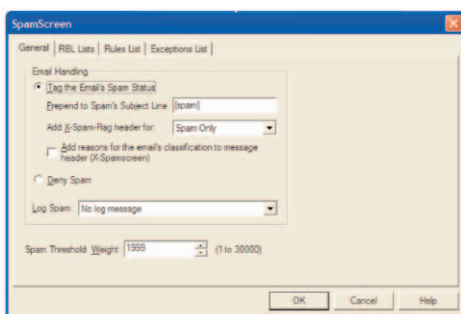
Existing spam blocking solutions can require you to purchase a separate server and software licenses for each user on your network, making them expensive to set up and difficult to maintain.

**For WatchGuard® Firebox® X owners, there's a better solution:**

- **SpamScreen** is fully integrated into your existing Firebox® X appliance – no extra hardware is needed. It's priced per appliance, not per user, so you avoid the expensive licensing offered by other vendors. Activation with just a software license key makes turning on the function a snap.
- A multi-layered filtering approach stops spam at the gateway before spam e-mail enters your network or clogs up your mail servers. Your mail is processed inside the firewall so you don't have to worry about privacy or confidentiality issues associated with online spam filter services.

## Intuitive, Integrated Management

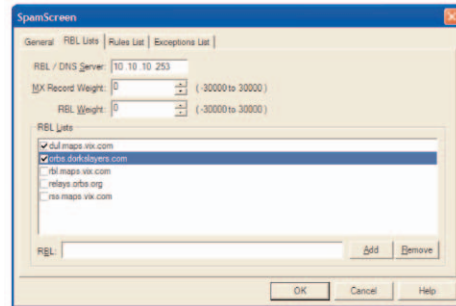
Access all spam blocking tools in WatchGuard® System Manager for easy, intuitive control and logging. SpamScreen lets you decide what's defined as spam.



### Flexible Spam Handling

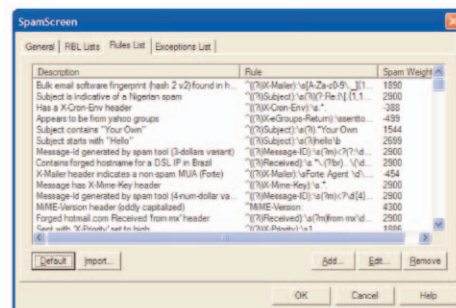
- Simple configuration makes spam management quick and easy.
- Delete spam at the Firebox or tag and forward it to an e-mail address for quick identification and sorting.
- Select the level of logging and reporting you need using the built-in LogViewer, which logs all denied e-mail to maintain a record of filtered messages.
- Generate graphical reports of Web access, usage, and time of day to

track where and how much spam you are blocking.



### Easy Spam Filter Configuration

- Configure additional Real-time Blackhole Lists and use a global network of known DNS blacklists.
- Create custom white lists for safe e-mail from customers, partners, or important news sources.
- Generate blacklists to block by IP address or sender name.



### Flexible Custom Rules

- Use rule sets from community lists or create your own to customize the level of spam filtering.
- Generate rule sets to create a variety of spam filters with full granularity.
- Add individual rules, modify existing ones, or import rule sets from newsgroups or other sources.

### Free 30-Day Trial!

Augment your Firebox X appliance with a 30-day SpamScreen trial, and see for yourself how WatchGuard SpamScreen can increase employee productivity and your network security. Contact a reseller today! Call 1.800.734.9905 (U.S./Canada) or +1.206.613.0895 (International), or find a reseller at [www.watchguard.com/sales/locate.asp](http://www.watchguard.com/sales/locate.asp).

## How It Works

- SpamScreen checks the source of each incoming SMTP e-mail against publicly recognized Real-time Blackhole Lists (RBLs), your custom filtering rulesets, and blacklists to identify potential spam e-mail.
- When a filtering match is found and the e-mail source is identified as a spam source, you are given three options for handling the e-mail message: Deny, Allow, or Allow and Tag the e-mail message with a warning to the addressee that it is suspicious.
- You can define exceptions to the WatchGuard spam signatures list, allowing e-mail from specific addresses or address patterns that may otherwise be blocked.

## SpamScreen for Firebox® X

### Firebox® X500

SpamScreen 1-Year Subscription	WG017092
SpamScreen 1-Year Renewal	WG017108

### Firebox® X700

SpamScreen 1-Year Subscription	WG017095
SpamScreen 1-Year Renewal	WG017105

### Firebox® X1000

SpamScreen 1-Year Subscription	WG017098
SpamScreen 1-Year Renewal	WG017106

### Firebox® X2500

SpamScreen 1-Year Subscription	WG017101
SpamScreen 1-Year Renewal	WG017107

## SpamScreen System and Network Requirements

- WatchGuard Firebox X or Firebox III running WatchGuard System Manager 7.2 or later
- Microsoft® Windows 2000, Windows NT, or XP
- An active LiveSecurity® Service subscription
- A locally hosted SMTP mail server



## Expand Firebox® X with More Add-Ons and Upgrades

Add features and services to Firebox X to expand your security appliance as your needs grow. Get Web filtering with WebBlocker, more network ports, Mobile User VPN upgrades, or renew your LiveSecurity® Service subscription. With WatchGuard® solutions, you can get on with your work and rest assured that your network is protected.

For more information about SpamScreen and additional features and services, visit:

[www.watchguard.com/products/x\\_security.asp](http://www.watchguard.com/products/x_security.asp)

#### ADDRESS:

505 Fifth Avenue South  
Suite 500  
Seattle, WA 98104

#### WEB:

[www.watchguard.com](http://www.watchguard.com)

#### E-MAIL:

[information@watchguard.com](mailto:information@watchguard.com)

#### U.S. SALES:

1.800.734.9905

#### INTERNATIONAL SALES:

+1.206.613.0895

No express or implied warranties are provided for herein. All specifications are subject to change and any expected future products, features or functionality will be provided on an if and when available basis.

© 2004 WatchGuard Technologies, Inc. All rights reserved. WatchGuard, the WatchGuard Logo, Firebox, and LiveSecurity are either trademarks or registered trademarks of WatchGuard Technologies, Inc. in the United States and/or other countries. All other trademarks and tradenames are the property of their respective owners. Part No. WGT66074\_0504

